



## 1764 – The Old Kings Highway Quest

### Lebanon, New Hampshire

Physical Difficulty: Easy

Special Features: Natural

Walking Conditions: Trail

Duration: 1:30

Season: May-Oct

Bring: Boots, Field Guide

**To get there:** Take exit 19 off of Interstate 89. Turn west off of the exit ramp. At first light, turn left up Poverty Lane and go 0.9 mile. Parking spots are on left at memorial plaque.

### Overview:

This Quest introduces the Old Kings Highway, maintained by the City of Lebanon's Recreation and Parks Department. The Recreation and Parks Department's goal is to provide a variety of quality recreation programs and special events, and to effectively develop and maintain recreation facilities for the community's use and enjoyment, which together enhance the quality of life for all residents of the City of Lebanon.



### Super Quest 2019: Gateway to Summer Fun

This quest is one of 25 featured in this year's Super Quest challenge to celebrate the 25<sup>th</sup> anniversary of Vital Communities. For the rest of your adventure: [vitalcommunities.org/superquest](https://www.vitalcommunities.org/superquest)

Now that you're here...

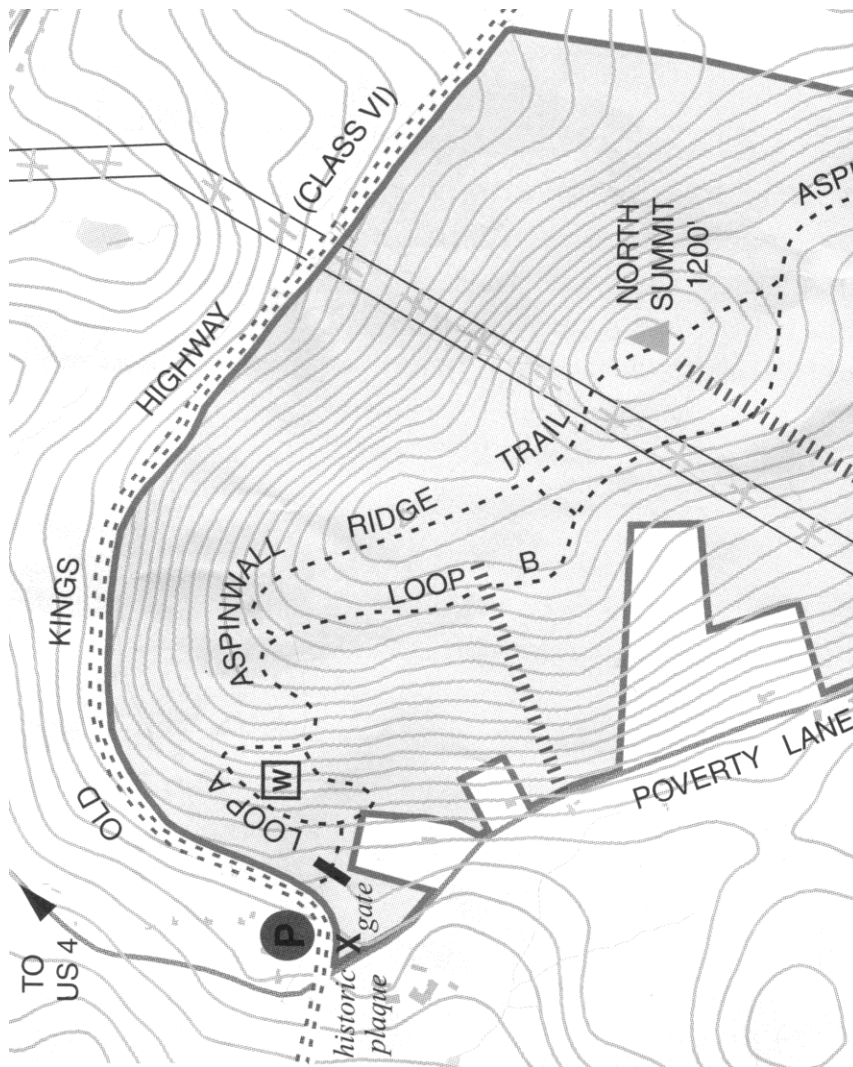
Pick your own fruit at Poverty Lane Orchards. Check them out at <https://www.povertylaneorchards.com/> to plan your visit.

**Clues:**

1. Begin at the rock with a weathered old plaque  
 And follow a road that will take you way back  
 To a time when the King of England  
 Aspired to rule over all this green land.

King George the 3<sup>rd</sup> once gave this road its name,  
 And some of Lebanon's earliest settlers to this place came.  
 Walk straight on ahead until you come to a trail.  
 Stay left on "Kings Highway" and you will not fail.

2. This road was planned to be nine rods wide.  
 How far would that be from side to side? (hint: one rod = 16.5 feet)  
 Most early road builders preferred the hilltops  
 As the ground was drier in well-drained spots.



3. Step on a large rock in the middle of the road.  
 Moving all of these rocks must have been a heavy load.  
 Stone walls line this road; they were moved by hand  
 To clear land for crops, hayfields or pastureland.

Walk on for a while and try to imagine this place  
 200 or more years ago, with a different pace  
 ...Horse-drawn carriages rolling by with grace  
 An animal pound was once located at this place...

In 1767, 162 folks, most having come from CT, called Lebanon home.  
 By year 2000, to 12,568 that number had grown.  
 Carry on down this road; you don't have to go fast,  
 And under a fallen tree you may have to pass.

A committee of proprietors came here to this spot  
 And divided this land into 100-acre lots.  
 Families moved here from far and from near;  
 The Aspinwall family farmed here for 95 years.

4. Walk a ways up the road and look for the snag of a tree.  
 It's up on the right, and it is full of holes: how can that be?  
 A treat for the woodpeckers, when they dig in the wood  
 It is bugs they are looking for, would that taste good?

Along this very road was Lebanon's first school.  
 Built in 1768 out of logs, it must have been cool.  
 Walk past a big tree, broken in half with a thump  
 And then look out for a tree growing out of stump!

5. Yellow birch trees can take root without much bother  
 Ahead on our Quest, you will see more than one other.  
 Go on, more than 100 steps to a tree that curves out on the right.  
 Check out all of the holes; what a sight.

These were made by a sapsucker looking for sap.  
 And behind in the woods, another woodpecker's trap.  
 Keep journeying along and find a beech tree with bumpy bark.  
 Nectria disease causes this bumpiness; you may see more in this park.

6. Find a tree on its side with roots like a star.  
 You will know you have come far.  
 On the left, find a tree that looks like it's growing out of the air  
 With a rock stuck in its roots; how unfair.

The other yellow birch tree we promised you'd see?  
 What a crazy root system on this neat tree!  
 Further ahead on the right,  
 Some barbed wire is in sight.

In the late 19<sup>th</sup> century it was added for clout.  
 The wire either helped keep animals in or animals out.  
 Cross over a brook in the road that is fine  
 And pass a giant majestic white pine

7. Walk on into the sun and under some power lines.  
 A fine view of Mt. Ascutney waits up the hill for another time.\*  
 Look at the stone walls on each side of this road:  
 Erosion has caused this road to go low.

8. This royal road is now only a trail;  
 Along this road, a car or wagon could no longer sail.  
 Walk under a tree that crosses this highway so good;  
 Cross another brook and notice stone walls going up in the woods.

Deacon James Perley Farnum and family beyond him  
 Had a farm on this road until 1921.  
 Walk on until you see stone walls getting taller:  
 Your treasure is close, but you don't need to holler.

Between the two beautiful walls on your left,  
 Where people and animals walked through the years,  
 Look down low on the right;  
 We know that the box will come into sight.

Sign your name in the book and collect your stamp impression;  
 Hope you enjoyed your trip back in time to early Lebanon.

\*Take a side trip up Loop A or B on the map for a view of Mt. Ascutney.

This Quest was created by Laura Dintino for the UVTA (Upper Valley Trails Alliance) Trails Day Celebration in 2007.

**Please be a good steward of the land: leave it better than you found it and pack out any trash you find.**



Valley Quest is a collection of treasure hunts that share and teach the natural gems and cultural heritage of the Upper Valley with children, families, adults, and visitors. It is a program of Vital Communities, a regional nonprofit working to engage citizens, organizations, and communities in creating solutions to our region's challenges. Learn more at [vitalcommunities.org](http://vitalcommunities.org).

Have a suggestion, question, comment, or idea for us? We'd love to hear from you. Reach us at [valleyquest@vitalcommunities.org](mailto:valleyquest@vitalcommunities.org) or 802-291-9100.