

Planning for a just, prosperous, and resilient future with climate change migration

Vital Communities <--> UVAW: Nov 9, 2021
(<https://vitalcommunities.org/climate-change/>)

Dr. Jay Shafer - jason.shafer@northernvermont.edu



Background



BS Meteorology



MS & PhD Meteorology



Faculty - Atmospheric Sciences



Founder / Entrepreneur

Northview Weather Vitals

4-years young,
bootstrapped in
Lyndonville, VT

Patented tech in
storm outage
prediction

Electric utility
customers in
transmission &
distribution

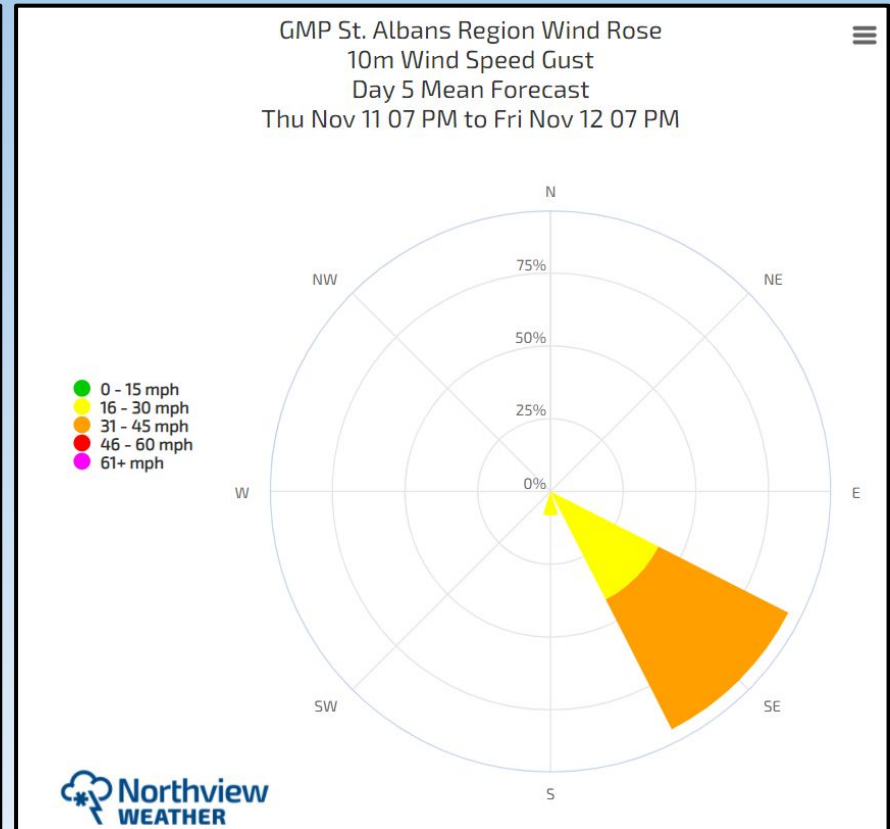
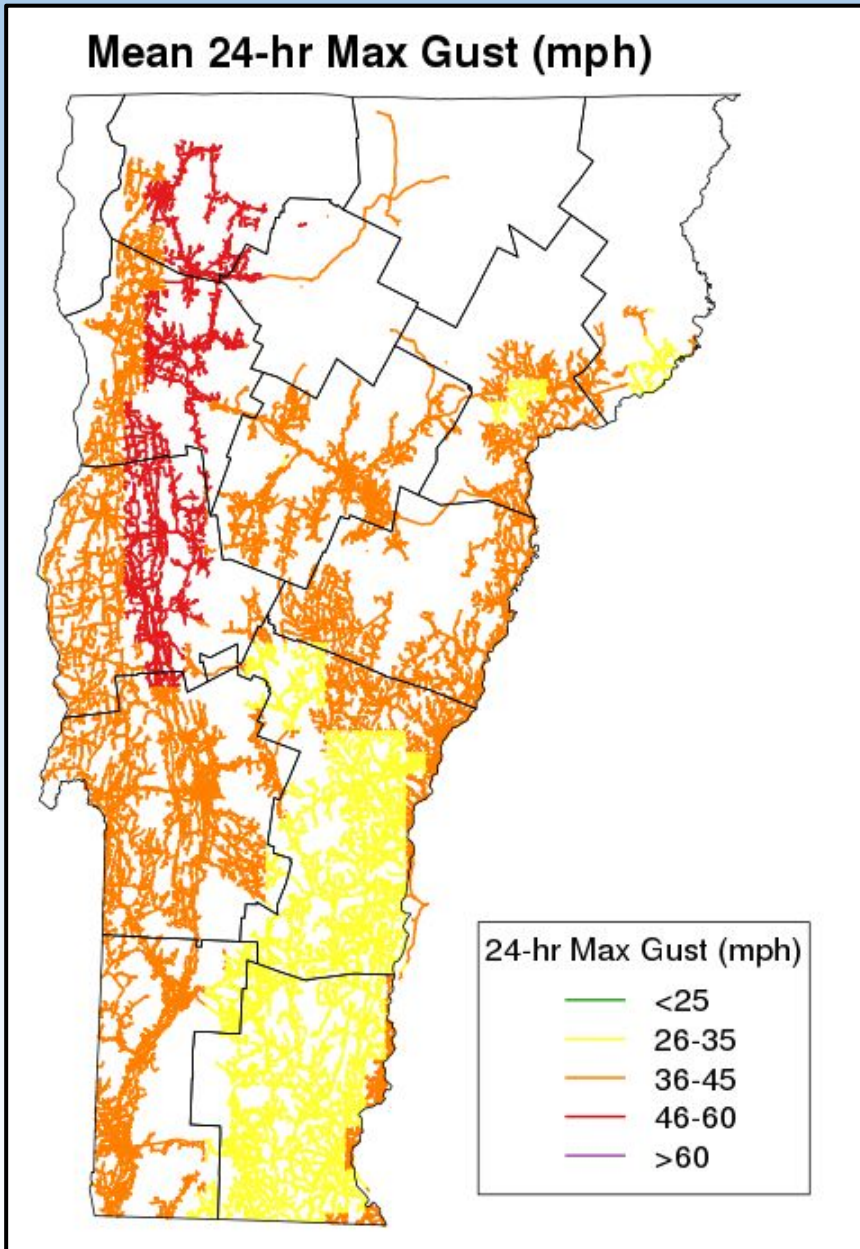
Software and
consulting services

Storm
preparedness
planning

Climate
resilience
planning

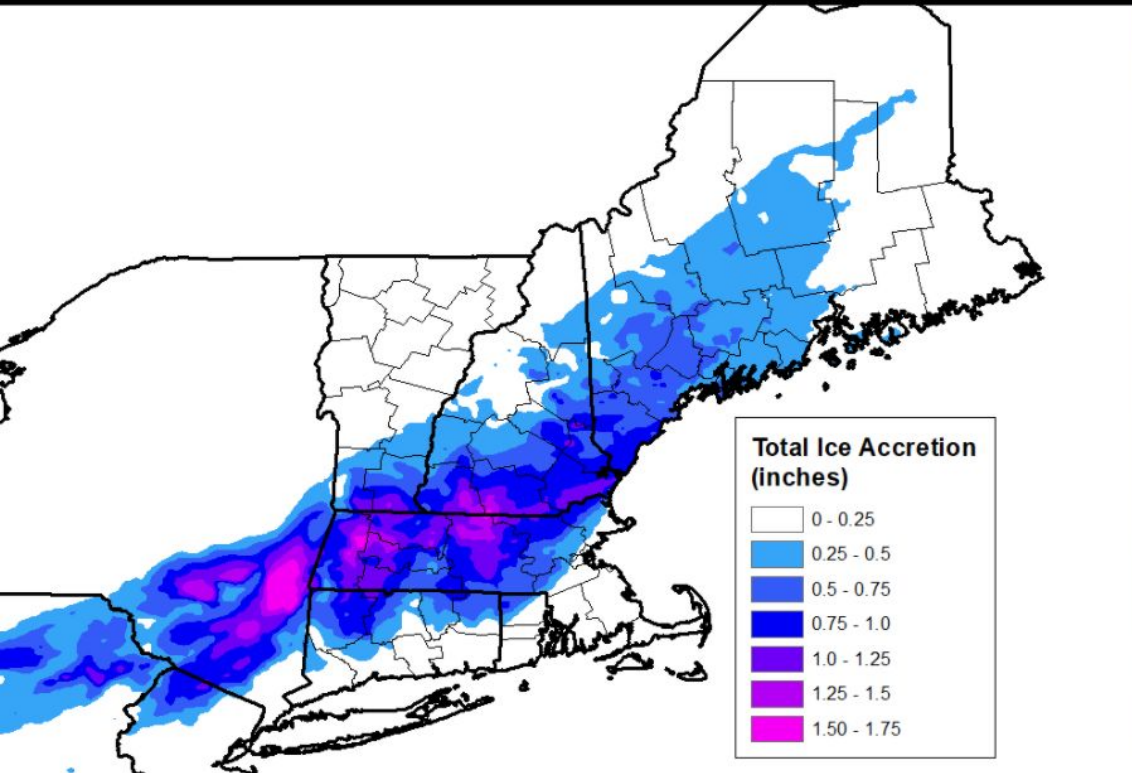
Asset and
vegetation
management

Operational weather prediction - customized analytics



Climate resilience research - understanding future risks

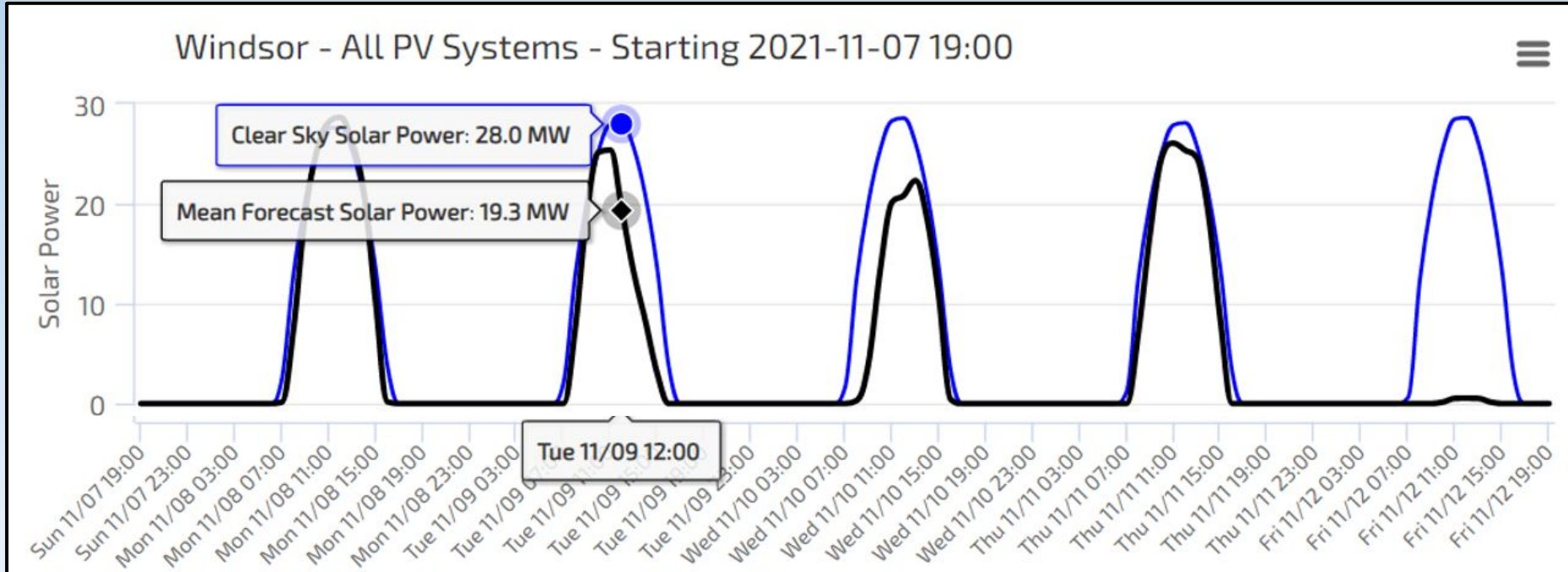
December 11 & 12, 2008 Total Ice Thickness



Overall weather risk on the Vermont electric grid shows that the most intense storms are tending to get stronger in a warmer and wetter climate. Estimated increases in power outages of +10 to +15% through 2050 (moderate confidence).



Solar Power Prediction - managing intermittency



A Regional Coalition - Build Back Better

Software/Tech cluster concept-lead by [CORI](#)



Applied Learning Partners

Dartmouth: [Dali Lab](#)

UVM: [Cat Coders](#)

[Vermont Technical College](#)

[Northern Vermont University](#)

[Community College of VT](#)

Community Partners/Projects

[VCET](#)

[BDCC: Brattleboro](#)

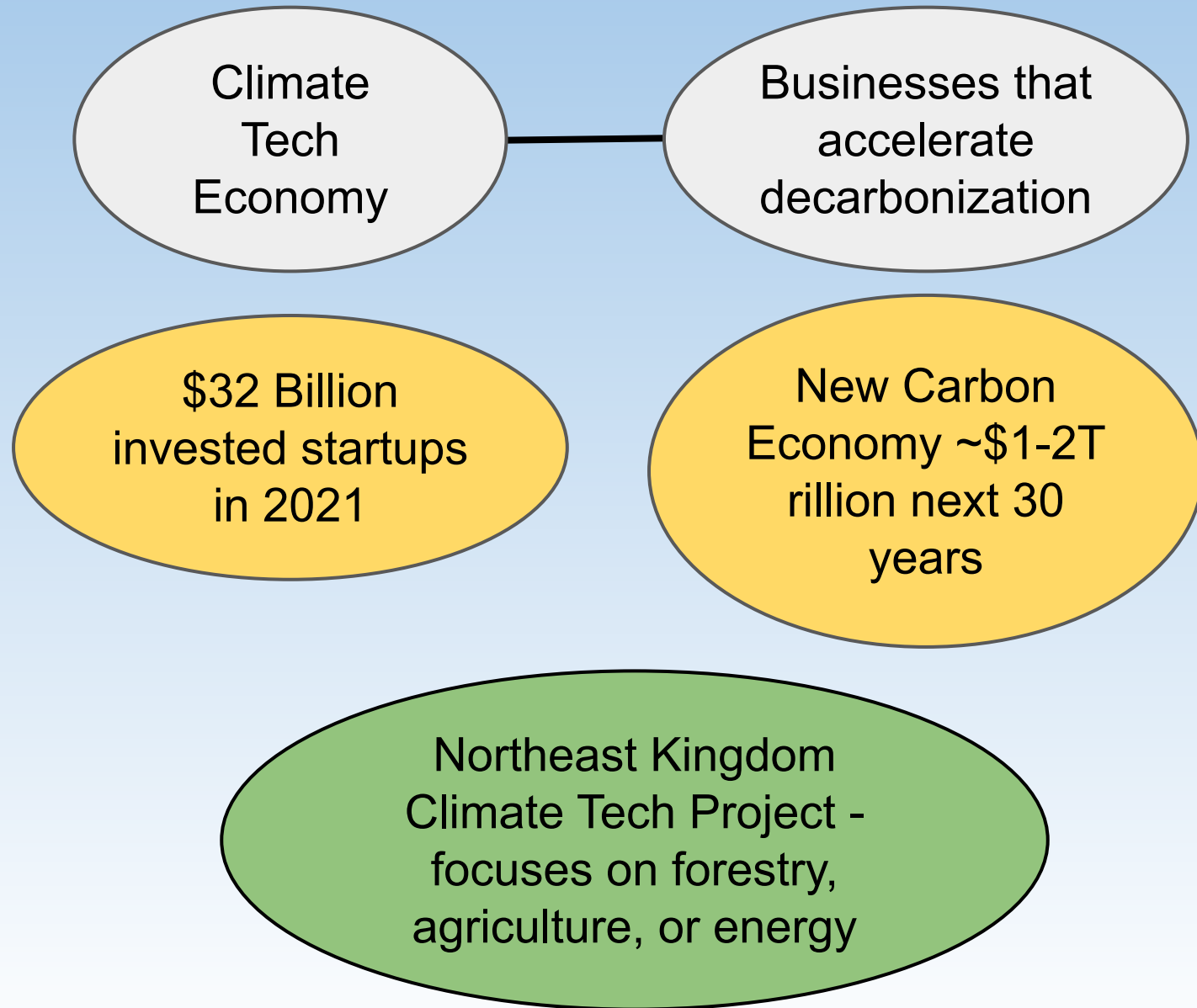
[CEDRR: Rutland](#)

[GMEDC: White River Junction](#)

[BRIC: Springfield](#)

[NVDA - Northeast Kingdom](#)

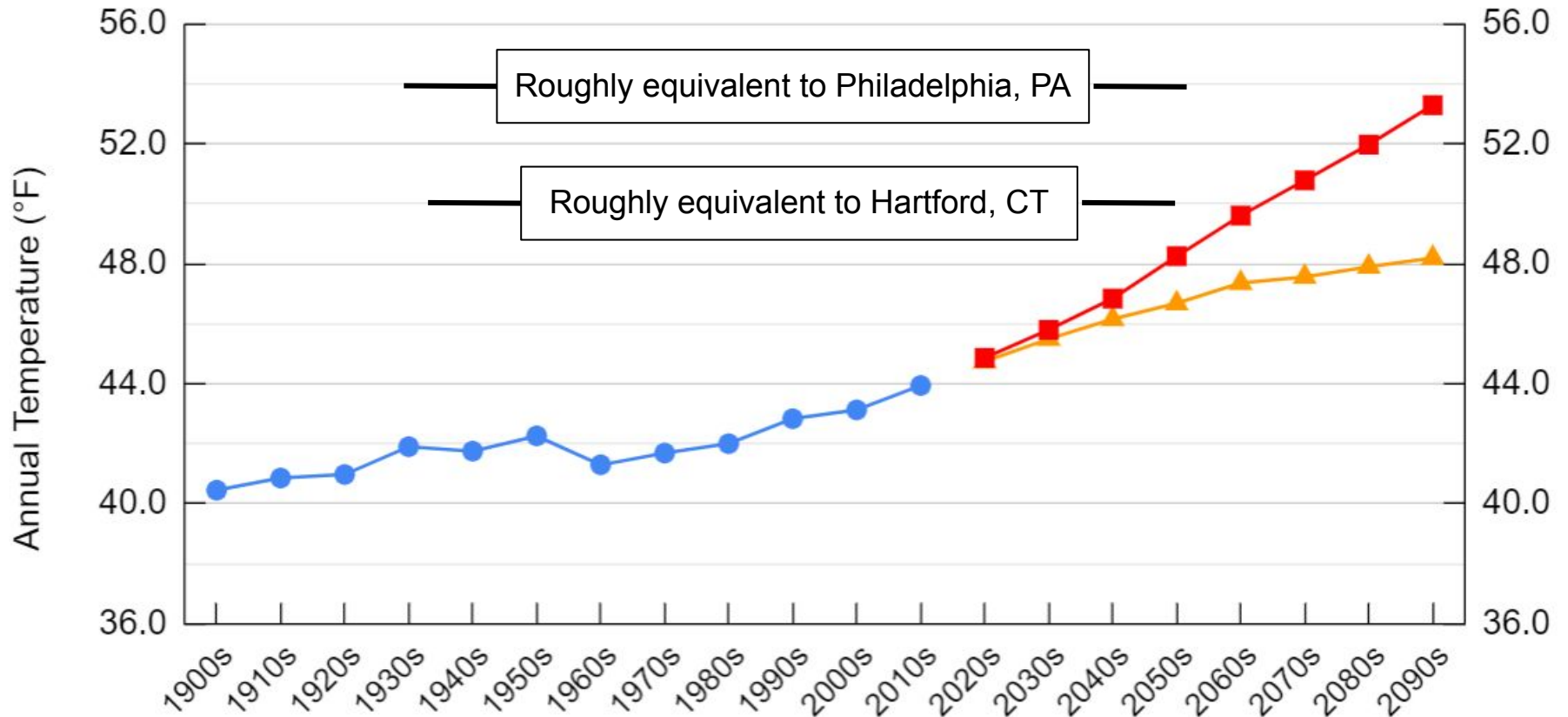
The Climate Tech Opportunity



Climate Migration

Vermont Temperature Trend and Projections

● Observed ▲ Lower Emissions ■ High Emissions



Projection data: <https://crt-climate-explorer.nemac.org/>

Observation data: <https://www.ncdc.noaa.gov/cag/divisional/mapping/43/pcp/202009/12/value>

New England Climate Projections (through 2050)

